



HITECH
eSmart Innovate Your World

Toi!itech

**SMART TOILETS
FOR SMART CITIES**



www.hitechsmart.com





HITECH
eSmart Innovate Your World

Toilitech®

Innovative toilet facilities
for a citizen-oriented
public service.

HiTech is fully owned subsidiary of HiTech Group from united kingdom. HiTech is a Manufacturer, System Integrator and a Maintenance company serving Smart Solutions, Homeland Security and Telecommunications.

It is established to focus on the new Digital Era requirements and introduce innovative digital infrastructure solutions in the region. HiTech brings its cumulative experience of more than 30 years in customizing innovative solutions and make them more economical, efficient and secure solutions. HiTech is being established in early 2010 to serve tremendous demand of smart cities applications and connected devices for Tourism, Municipalities, Smart city entities, transport, Education, Health, Industrial, Telecom and Entertainment verticals business needs.

As an exclusive partner of Toilitech from Italy is introducing latest and revolutionary smart/self cleaning public toilets in the region. HiTech products profiles includes Smart Bench, Anti-Drone Solutions, Smart Public Toilets, Special Bollards, Smart Poles, Smart Cleaning Solutions and many more.

With is Head Quarter in Riyadh, HiTech are experts in Smart Solutions with more than 200 seasoned professionals and industry experts. Our successful track records includes verticals such as Telecom, Defense and Government Entities. HiTech are also developing certain niche applications to server B2B and B2C requirements.

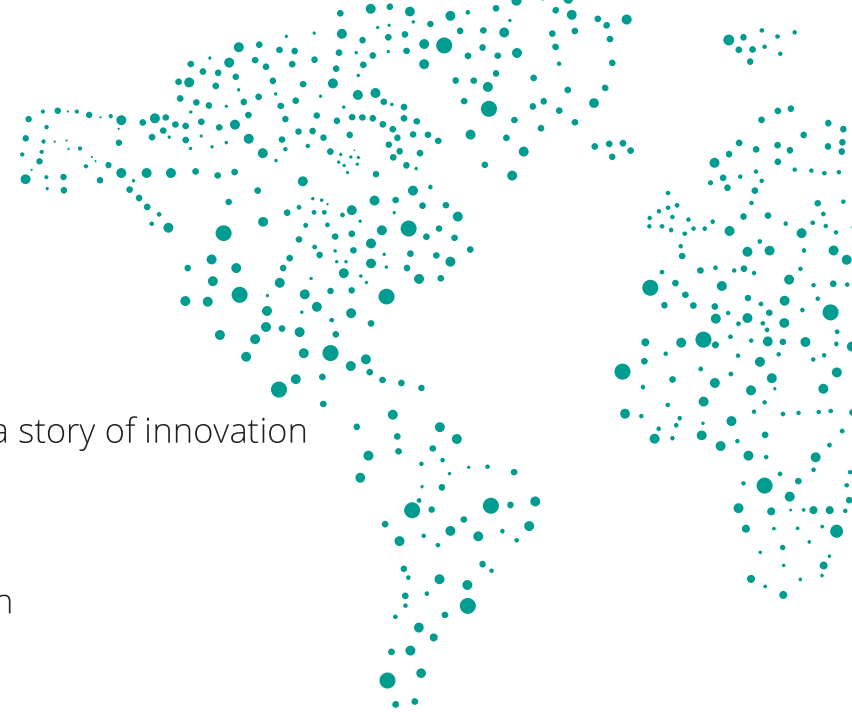
HiTech offer's customer support round the clock which has added to our credibility. With our exceptional partners and trained professionals, we have been serving local and international clients successfully for over 10 years and are expanding our global foot print includes GCC, Asia and Europe.





index

- 4 For more than 30 years, a story of innovation
- 6 The smart toilet
- 8 Flexibility becomes design
- 10 Cleanliness
- 12 Accessibility
- 14 Comfort
- 16 Technology for safety
- 18 Reliability
- 20 Sustainable projects
- 22 Solutions for cities
- 24 An international reality
- 26 Worldwide projects



for more than 30 years, a story of INNOVATION

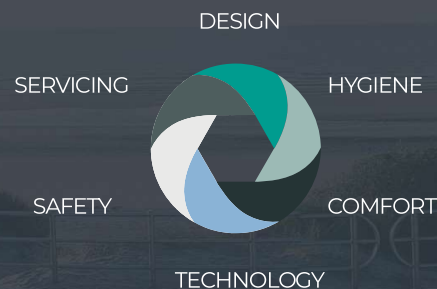
Established in 2014, TOILITECH is the brand with which PTMatic commercializes self-cleaning toilets, automatic public toilets (APT), prefabricated toilets, eco-friendly toilets and urban furniture integrated solutions.

TOILITECH serves the international market and, thanks to its capacity for innovation and ongoing development of cutting-edge formal and technological solutions, is one of the world's leading names in the supply of public toilets.

Our mission

How the public perceives hygiene and safety when using public restrooms is of the utmost importance: this is the main goal we aim at every time we design and produce a toilet. Our long-standing experience in producing sanitary facilities for the public allows us to design a wide range of products that provides an efficient response to every demand of our Clients. Some of PTMatic's self-cleaning toilets have been in operation for more than 20 years, and are still perfectly functioning thanks to our periodic maintenance service.

Our strong points



Our toilets and restrooms can be installed in open areas such as car parks, markets, bus terminals, parks, squares, etc. or in existing buildings -new or historical- and in underground car parks, metro stations, etc...

TIMELINE

1984

creation of TMatic

TMATIC- self-cleaning toilet in collaboration with Architect Marco Zanuso

1994

creation of PT-line®

remote control system for toilets

1998

Lava-Tergipavimento®

patented floor wash/drying system

2008

creation of DCN-ECO3®

night-time disinfection system

2015

North America

Toilitech North America is founded

2021

Saudi Arabia

Hitech exclusive partner of Toilitech

1983

foundation

PTMatic is founded by Innocente Varlonga

1989

creation of TAU-H

self-cleaning toilet for disabled users

1996

creation of T BOX

a new line of indoor self-cleaning toilets

2004

Middle East

PTMatic Middle East is established

2014

France

acquires TOILITECH, which becomes the international PTMatic brand

2016

Bulgaria

Toilitech Bulgaria is established

30years
OF EXPERIENCE

25 mIn
ANNUAL TURNOVER

76%
ON FOREIGN MARKETS

+70%
ANNUAL INCREASE
SINCE 2008



ITALY: PRODUCTION CENTRES

The Group's production centers have a total covered space of approx. 8.000 m² and are divided in three factories strategically located within a 30 km radius.

The location of the factories allows us to exploit the industrial network and local Regional services, favoring easy relationships with dynamic companies present on the international market.

RESCALDINA (MI)

A 9.200 m² lot (6.500 m² uncovered and 2.700 m² covered). 1.400 m² are intended for production and 1.300 m² for the warehouse.

BAREGGIO (MI)

A 4.100 m² lot (2.200 m² uncovered and 1.900 m² covered). 1.000 m² are destined for production, 720 m² for the warehouse and 180 m² for offices.

CARONNO PERTUSELLA (VA)

A 6.300 m² lot (3.100 uncovered and 3.200 covered). 1.900 m² are intended for production, 900 m² for the warehouse and 400 m² for offices.



toilet 2.0

THE SMART TOILET

Toilitech exclusive technology transforms traditional public facilities in machines of the latest generation, able to provide extremely high standards of hygiene, cleanliness and safety. Thanks to special technological devices, our self-cleaning toilets are cleaned and sanitized after each use. Remote monitoring of the toilet allows us to customize maintenance operations on the basis of actual usage, optimizing costs and minimizing service technicians' intervention.



Cutting-edge technology monitors every access to the toilet also on the basis of the type of user, minimizing the risks of misuse and acts of vandalism.



Our exclusive self-diagnosis system guarantees perfect functioning of the toilet, with real-time control of possible malfunctions and immediate intervention from remote, guaranteeing maximum safety to users.

made in Italy style

FLEXIBILITY BECOMES DESIGN

Every project is unique: our toilets are designed and built with a tailored approach, to customize the product according to each context and to the needs of individual Clients. Our large variety of available solutions and the flexibility of our construction systems allow us to meet the needs of a wide range of aesthetic and design requirements.





Customized solutions
for the provision
of public toilets.




first of all CLEANLINESS

Toilitech self-cleaning toilets prevent typical public toilet problems thanks to a special technology that guarantees hygiene and disinfection after each use and a simple management of consumables.

Our self-cleaning toilets are equipped with an exclusive technology to ensure cleanliness and disinfection: the toilet bowl is washed and dried and our patented **Lava;-Tergipavimento®** system, with its shifting device that scours the entire surface of the toilet, removes all debris from the floor and washes and dries it perfectly.

Our nighttime disinfection system **DCN-ECO3®**, unique on the market, removes up to 99% of bacteria and guarantees total disinfection of the toilet, even in the most difficult parts to reach.

Our automatic **PT-fresh®** odor control system, placed inside the cubicle, sprays a pre-determined quantity of deodorant mix at specified intervals, guaranteeing a pleasantly scented environment.



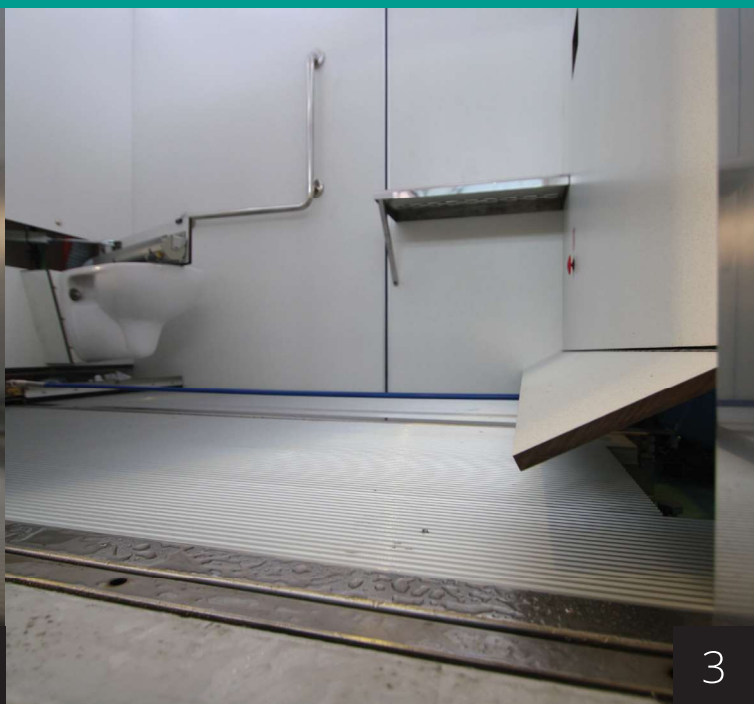
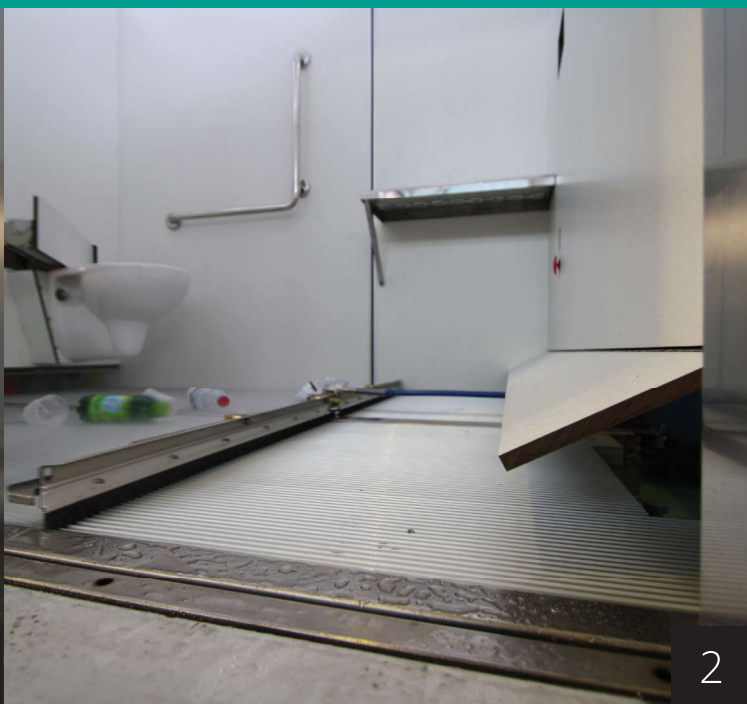
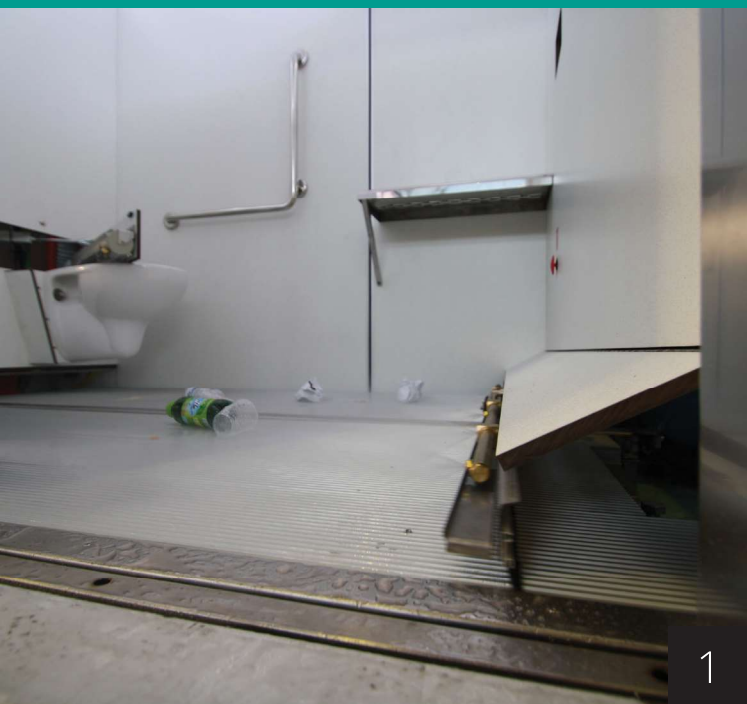
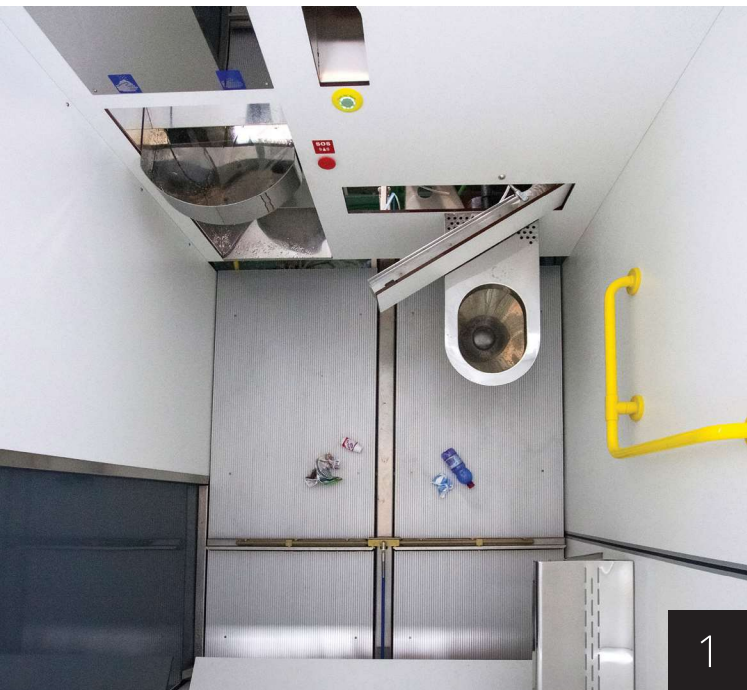
99% OF BACTERIA ELIMINATED

 Nighttime disinfection of the entire toilet with a dry mist of silver hydrogen peroxide, which eliminates 99% of bacteria and is free of pollutant agents.



DISINFECTION OF WASHBASIN

 The washbasin is cleaned and washed after each use. All possible trash is removed and conveyed to the technical room.



for everyone

ACCESSIBILITY

Easy access to public toilets is essential when moving around cities. There is a need to guarantee to all citizens, including the weakest, the possibility of using public facilities without problems.

Our toilets are designed and equipped with special technical solutions that make them easily accessible to every kind of user: disabled, elderly and children can use our toilets with extreme ease and total safety. The semi-recessed built-in stainless steel washbasin, with no pedestal and free of low barriers, helps full front access to wheelchairs. Automatic “no touch” dispensers are easy to use.

Big LED pushbuttons, with instructions in BRAILLE, improve use of the environment to the visually impaired and, in general, to all users with visual problems (e.g. elderly users).

The weight-control system guarantees safety of the toilet should a child accidentally access the cubicle. In fact, if the weight is lower than established, the system keeps the door of the toilet open until a grown-up enters the cubicle. A stainless-steel changing table with seat help grown-ups use the toilet even with very small children.



THE WASHBASIN

The stainless-steel washbasin is designed to be easily utilized by all end users. It is equipped with automatic soap, water and hot air hand-drier dispensers.



a pleasant environment

COMFORT

Ergonomic study of inner spaces and attention to detail are essential features of our toilet design.

DESIGN AND FINISHING

The warm and cozy finish of the inner HPL finish, the light colors of the whole interior, the large amount of light coming from the glazed dome placed on the top cover and from the automatic lighting system create a wide and comfortable space. Inner walls are perfectly smooth, easy to wash, do not retain dirt and avoid accumulation of liquids.

The profiled aluminum floor is slip-resistant, anti-fingerprint and seamless.

When someone enters the toilet, the automatic odor control system sprays a pleasant and persistent fresh, clean smell.

Devices like the SOS push-button and the **PT-call**® emergency call system improve the feeling of safety in the user.

All Toilitech toilets can be equipped with temperature control system, to monitor heating during winter or air conditioning during the summer.



THE FLOOR

The floor, made with profiled aluminum slats, is slip-resistant, anti-fingerprint and anti-bacterial. It does not require periodic maintenance, because the interlocking slats allow easy disposal of wastewaters, preventing the water stagnation that occurs with other types of flooring, for example ceramic tiles.



UNBREAKABLE MIRROR

In stainless steel

LED LIGHTING

Low consumption

CERAMIC OR STAINLESS STEEL TOILET BOWL

With anti-overflow
device

AIR CONDITIONING

wall recessed,
anti-vandal



the user is our focus

TECHNOLOGY FOR SAFETY

Designing a public toilet requires special attention to the safety of the user and protection from acts of vandalism.

Throughout our many years of experience, we have acquired all the necessary expertise to design and construct technological systems that guarantee total safety to our toilets.

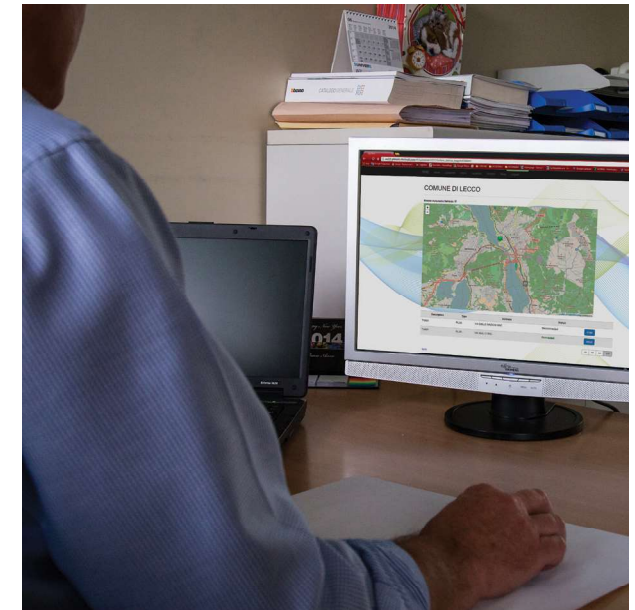
Vandalism is another very important issue: a vandalized toilet is not used because it is perceived as dirty and “unsafe”. Our toilets are designed to minimize acts of vandalism: all our components are anti-vandalism and fireproof, wall-recessed and accessible only from the technical room.



SOS PUSH-BUTTONS



SOS pushbuttons open the toilet door in case of medical emergency, and function also in case of power cuts.



PT-LINE®



PT-line® is a remote control system that monitors the toilet in real time and allows emergency operations, for example opening of the door.



The exclusive shape of the washbasin guarantees that all hazardous material (e.g. syringes) is conveyed to the technical room, preventing any accidental contact with the user.



The weight-detection system flooring allows managing of possible misuse: when the system detects a higher weight than established, the door is automatically opened and the toilet enters emergency mode.



guaranteeing **RELIABILITY**

The use of extremely resistant materials as stainless steel, reinforced concrete and HPL, together with a careful study of all inner components, guarantee an extremely reliable product in the long term.



Our toilets are
**operative for an
average of 18 years**
even if subject to
intensive use.





Our department for toilet servicing, management and maintenance, supported by advanced wireless remote control technology, allows us to keep our toilets in perfect efficiency in every country of installation.

the environment as a resource

SUSTAINABLE PROJECTS

Environmental protection is a fundamental value for our collectivity. This is reflected in our use of materials and technologies that minimize the environmental impact of our activities, reducing consumption of water and power.



More than 90% of our toilets' components is completely recyclable (cement, aluminum, plastic). A disposal service for toilets that have reached the end of their life cycle is available at our plant.

Our self-cleaning toilets have a washing system that uses up to 35% less water compared to traditional systems, with a consumption of 16 liters per cycle. When not in use, the water system is completely shut, with no risks of leaks or waste of water.

External and inner lighting of the toilet is provided by 24V LED lights. When not in use, the lights are off and there is no waste of energy. Total energy consumption is about 20 W per cycle.

Furthermore, our wide range of products includes the T.Air air toilet line, which does not need connections to municipal sewerage or electrical networks: these toilets are constructed with eco-friendly materials and can be installed in "delicate" areas such as beaches, mountain parks and golf courses.



WE USE MATERIALS
AND TECHNOLOGIES THAT MINIMIZE
THE ENVIRONMENTAL IMPACT
OF OUR ACTIVITIES

+90%



RECYCLABLE
COMPONENTS

-35%



WATER
CONSUMPTION
COMPARED TO
TRADITIONAL
SYSTEMS

20 W



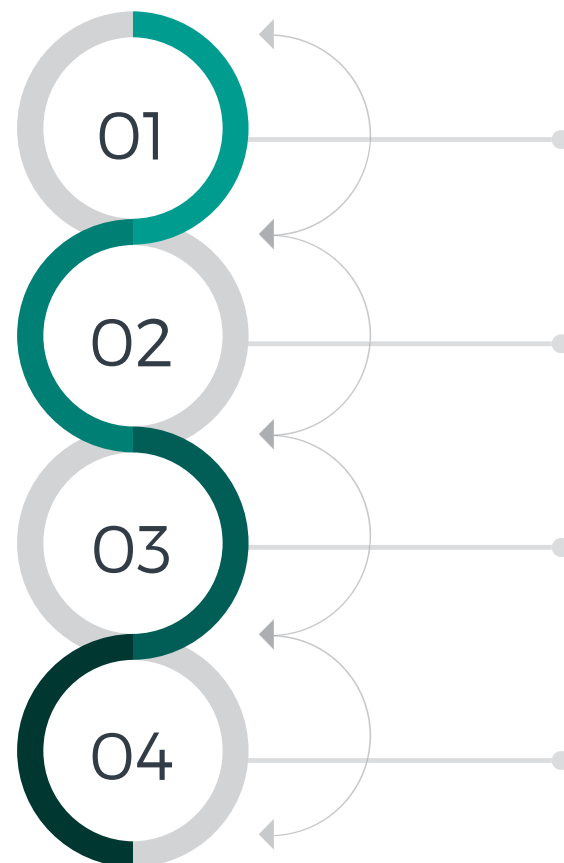
TOTAL
CONSUMPTION
PER CYCLE



Toilitech

SOLUTIONS FOR CITIES

Thanks to its long-standing experience, Toilitech not only designs and sells public facilities but also ensures optimal Customer Service. We are able to deliver global support to maintain our toilets in perfect efficiency and give our Clients all the necessary tools to manage our products.



PT-line®

our exclusive remote control system allows you to control the toilet and its consumables in real time. PT-line can be accessed by mobile, pc or tablet, so you can quickly manage your toilet from everywhere!

PT-call®

our special emergency call device contacts our central monitoring room. In case of an emergency, the user can push a button and directly call our customer service!

Maintenance

our on-site service formula allows you to maintain the facility in perfect efficiency and manages every aspect of the toilet, from the cleaning to the collection of coins to special interventions.

Reporting

thanks to our exclusive technology, we are able to deliver reports on the number of users, amount of collected coins, hours of service, etc. This allows you to better plan maintenance interventions and minimize/optimize operating costs.



Toilitech

AN INTERNATIONAL REALITY

PTMatic has been active in the market of public toilets for more than thirty years, establishing its worldwide leadership and expanding its scope of activity to foreign markets.

In Italy, PTMatic has installed 1800 toilets, in Europe 3500, of which 1000 only in France. In the Middle East we have installed more than 150 units.

Throughout the years, PTMatic has established local entities to manage directly its reference markets using the brand **"TOILITECH"**, originally conceived for the French market.

Currently, the Group is active across Europe through an efficient network of distributors and manages directly its markets in France, Spain, Bulgaria and Italy.

Worldwide, we are actively present in North America and in the entire Middle East.





AMSTERDAM





BILBAO





ZIERIKZEE









JEDDAH













openbaar toilet
Opentijdstijden
Dagelijks van 08:00-21:00 uur
Storingen en Klachten graag doorgeven aan
de Servicelijn, tel. (0111)452111

“ Our toilets are born
from the harmonic integration
of Italian design and technology,
and guarantee the highest level
of quality and durability ”



HITECH
eSmart Innovate Your World

HITECH SAUDI ARABIA CONTACTS:

Project and Sales Manager

Engr. Abdullah Bawazir

M: +966 55 501 5798

Email: Abdullah@hitechfence.com

Sales@hitechfence.com

Technical Department

Engr. Adnan Talib

M: +966 55 501 5792

Email: Adnantalib@hitechfence.com

General Manager

Mr. Muhammad Javaid Iqbal, PMP

M: +966 55 501 5795

Email: Javaid@nartel-ksa.com

ADDRESS:

HITECH FENCE and Steel Industries
59 ACWA Power Industrial Zone
Second Industrial area Alkharj Road,
Riyadh. Saudi Arabia.

www.hitechsmart.com

Toilitech

T +39 02 90390002

F +39 02 9019262

info@toilitech.com

www.toilitech.com

