

Toiitech[®]



self cleaning toilets

TMAX



TMAX is an **AUTOMATIC, SELF-CLEANING** toilet for **OUTDOOR** installation, thought and built to combine **design and technology**, ensuring **security for the user and a perfect sanitizing and drying at every use**.

This model is the answer to the aesthetic and functional needs of modern cities: the high resistance of the materials, the flexibility of external finishes, allow a perfect integration with any urban context.

Our washing, disinfectant and sanitizing PLUS[®] technology ensure a perfect cleaning, disinfection and drying of the toilet, and is based on a patented system that wash and dry the seating surface of the wc-bowl and thanks to our **Lava;-Tergipavimento[®]**, removes waste, wash and dried the floor, with a consumption of water extremely low (about 16 lt. per cycle of use). This toilet is suitable to be installed in areas very crowded and with very high standards of cleanliness and sanitation.

Features:

- Concrete block with dimensions (they change with different design): external 3,04 m x 2,10 m, high 2,40 m - internal 1,65 m x 2,00 m
- **Washing and sanitizing PLUS[®] technology with Lava;-Tergipavimento[®]**: washing, disinfection and drying of the wc-bowl and of the walls (up to around 80 cm), mechanical removal of wastes, washing, drying and disinfection of the floor
- Concrete block, **anti-vandal, fireproof, anti-graffiti**
- External security access to technical room
- Extremely flexibility for external finishing
- Interior HPL walls, **without spacing, outsidefixing, fireproof, anti-vandal, anti-graffiti**
- **Pneumatic stainless steel door** (works also without electricity)
- **Detector of presence of person with electronic weight sensors under the floor**, is possible to set min/max weight. Stainless steel handbasin with patented system antisyringe, SOS buttons
- **Night disinfection system DCN-ECO3[®]**, exclusive PTMatic, without release of pollutants into the environment
- **Access control** with button for free or coin-machine, or badges with possibility of setting access hours
- **Accessibility for users with disabilities in accordance with european requirements**
- **Self-diagnosis system** in the event of a fault and remote signaling in real time to GSM mobile or computer.





INFO PANEL

- Instructions in 4 languages
- Customizable
- Access with coins or badge

CONCRETE BLOCK

- Durable
- Anti-vandal and fireproof
- Flexible features and dimensions
- Customizable

LARGE POLYCARBONATE DOME

- Natural lighting
- Forced ventilation

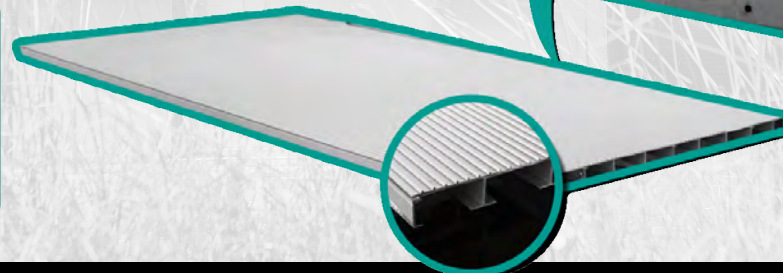
INTERNAL HPL PANELS

- Hygienic
- Shock-proof
- Fire-proof
- Customizable



ALUMINUM FLOOR

- Non-slip
- Non-foot print
- Antibacterial
- Durable
- No maintenance



PNEUMATIC STAINLESS STEEL SLIDING DOOR

- Pneumatic sliding door
- Anti-vandal
- Anti-sign
- Durable

TECHNICAL DOOR

- External security access
- Anti-vandal
- Anti-sign
- Durable
- Maintenance is possible also with person inside the toilet

self cleaning toilets

TMAX

TOILTECH for environment



DISINFECTION SYSTEM DCN-ECO3®:

At night, toilet is completely disinfected without release of pollutants into the environment.

LOW WATER CONSUMPTION:

Our washing system uses 35% less water than conventional systems, with a consumption of 16 liters per cycle. Without person inside, water system is completely closed, with no risk of loss or waste of water.

LOW ENVIRONMENTAL IMPACT:

90% of components of the toilet are completely recyclable (cement, aluminum, plastic, etc). In our factory is possible to dispose old toilets.

LOW CONSUMPTION LIGHTING SYSTEM WITH LED:

External and internal illumination of the toilet is with LED lamps (12 V). Total electricity consumption is 20 W per cycle. Without person inside, lights remain off, without wasting energy.

REMOTE CONTROL:

Our toilets can be equipped with a remote control system that checks the status of the toilet. This allows to reduce number of site visits, optimizing the operations of the maintainer with a fuel saving of about 10%.



TOILITEC works with ISO 14000

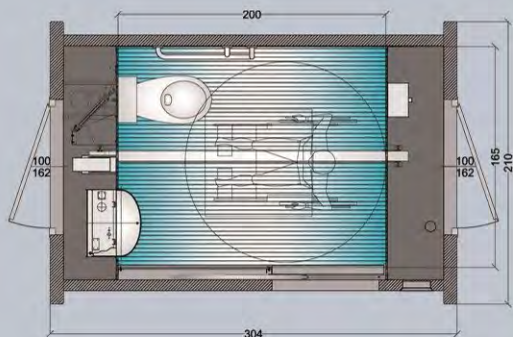
self cleaning toilets

TMAX



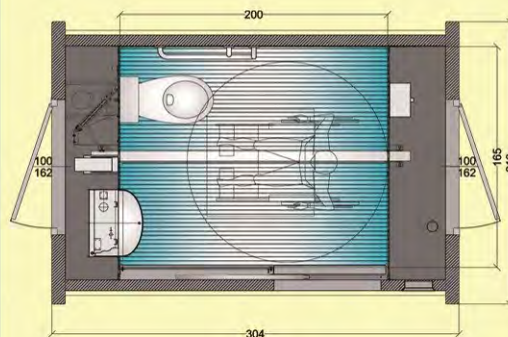
BASE MODEL

- Block with enlarged side walls
- Roof Metal Profile dark brown colour
- Beige coloured on front and back side and grey on side.



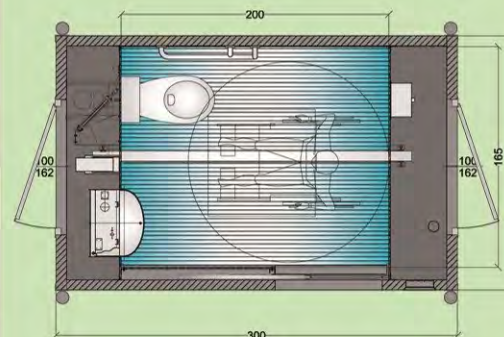
MILAN MODEL

- Block with enlarged side walls
- Metal perimeter moulding on front and back with pictograms
- External LED lighting
- External block design with horizontal lines on front and back walls
- Internal LED light vandal-proof buttons



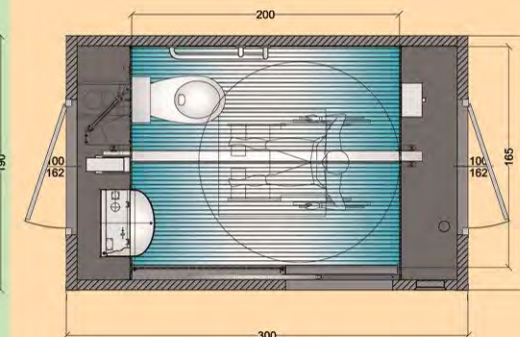
VENEZIA MODEL

- Standard block with iron pillars and external cladding with gres ceramic on four sides
- Roof Metal perimeter moulding, type "historic" cornice, gray mica, "deco" design
- Internal LED light large buttons



AMSTERDAM MODEL

- Standard block structure
- Roof Metal perimeter moulding "Design Amsterdam" as a completion of the perimeter cover with pictograms
- External LED lighting
- External block design with horizontal lines
- Internal LED light large buttons



toilet dimensions change according to local regulations for disabled users



PROJECTS

self cleaning toilets

TMAX

Middelkerke



self cleaning toilets

TMAX

Heerlen



self cleaning toilets

TMAX

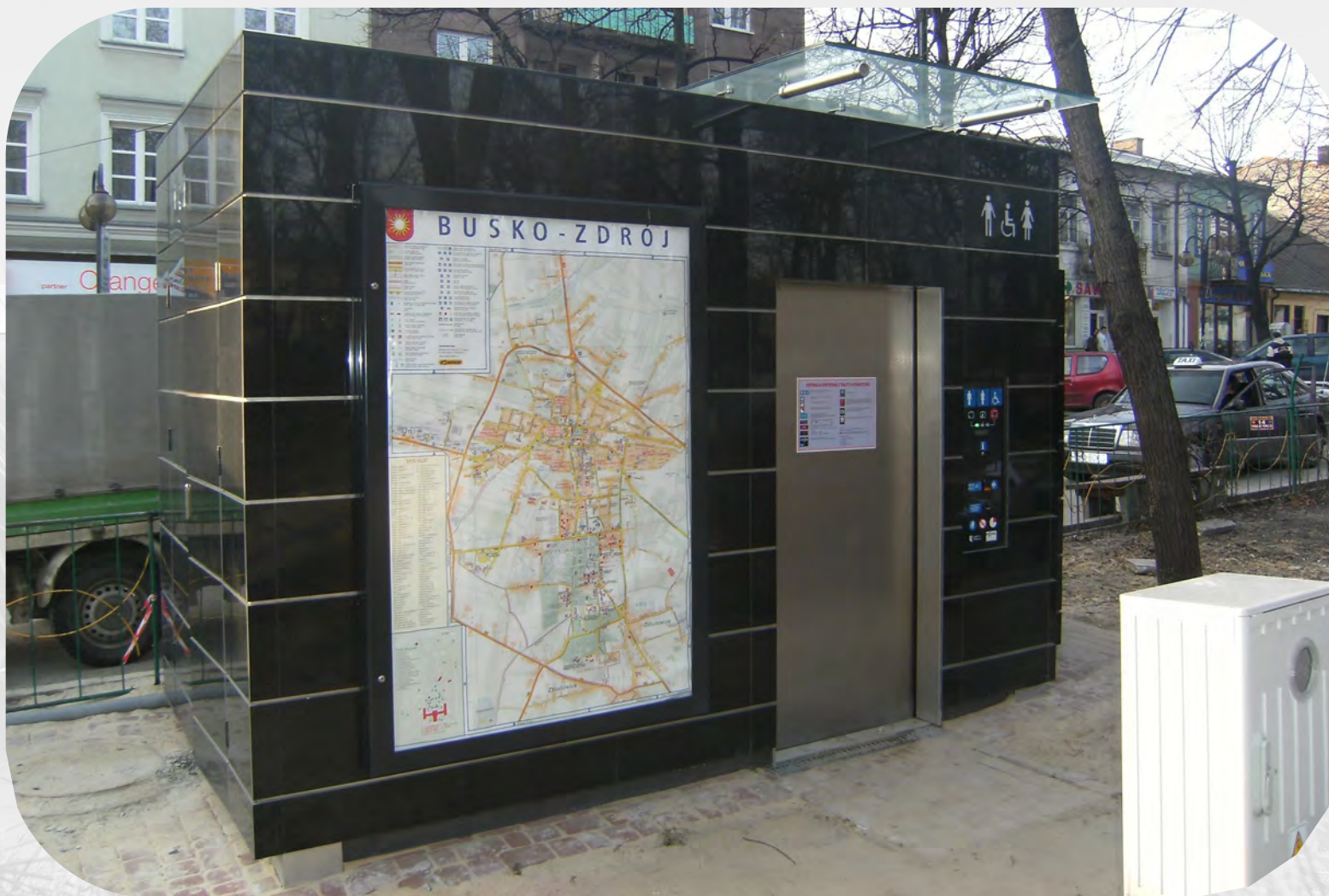
Milan



self cleaning toilets

TMAX

Busko



self cleaning toilets

TMAX

Koksijde



self cleaning toilets

TMAX

Grosseto



self cleaning toilets

TMAX

Florence



self cleaning toilets

TMAX

INTERIORS



Security stainless steel mirror

- antivandal

Low consumption lighting with LED

In-built automatic stainless steel hand basin:

- no-touch dispenser for soap/water/air
- anti-syringe security system
- Fireproof

Automatic toilet paper dispenser:

- fireproof
- antivandal

Disable equipments:

- disable handrails (stainless steel inox on request)
- buttons with led light (braille info on request)

HPL wall panels:

- extremely durable
- fireproof
- multiple colors available
- without spacing or outside fixing

Stainless steel wall-hung bowl:

- ceramic available
- non-spill system

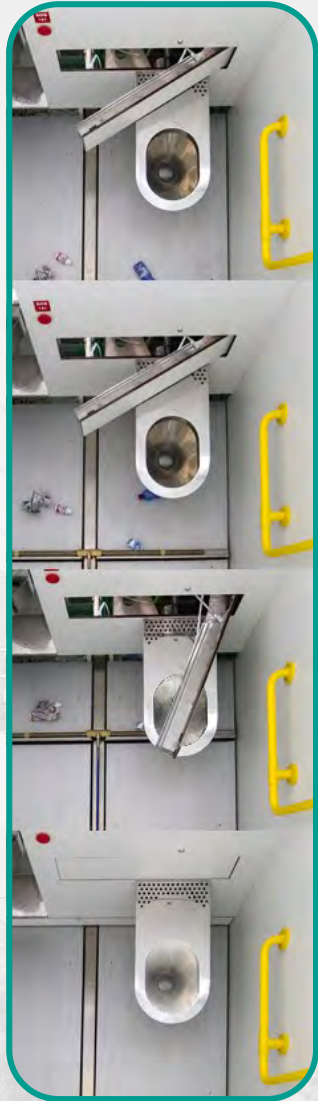
ALUMINUM FLOOR

- non-slip
- non-foot print
- antibacterial
- durable
- no maintenance

self cleaning toilets

TMAX

PLUS TECHNOLOGY® : WASHING, DISINFECTION AND DRYING SYSTEM



Washing and Drying System of wc-bowl:

When the user is not in the unit, the bowl is washed, disinfected and dried. The dispensers of water and disinfectant are positioned in a device (door), that rotates horizontally on the bowl. Washing and disinfection are carried out during the forward run; drying during the backward run.

Wc-bowl washing occurs in three phases:

- ⇒ **A continuous water veil** inside the bowl during the use, prevent from “adhesions” and facilitating the washing.
- ⇒ **Rinse:** after every use, is sprayed at high pressure a mixture of water and disinfectant (about 6 liters), with closed-circuit discharge into the sewer system.
- ⇒ **Washing and disinfection of sitting bowl and walls:** nozzles located on rotating device spray a pressurized jets of water and disinfectant. The rotating movement of the washing device, the inclination of jets and the high pressure, produce a “chisel effect”, that improve the washing system of the wc-bowl.

Drying of sitting surface:

is obtained by blowing air under pressure, generated by a tangential electric fan (560 mc/h a 500 Pa), through a diffuser, that conveys and addresses the air flow in such a way, useful to eliminate any residual of water resulting from the cleaning of the sitting surface. The electric fan is "low noise".

Walls washing:

Washing and disinfection of the walls around the wc bowl, until an high of 80 cm



Washing and disinfection system PLUS TECHNOLOGY®:

Advanced and innovative system, patented PTMatic, to improve the level of hygiene of the floor.

Floor is cleaned, washed, disinfected and dried thanks to patented system **Lava;-Tergipavimento®** improves the hygiene level of the floor, thanks to 5 combined actions when the device switching back and forth.

The device is located under the lateral wall of the user's room. A vandal resistant door opens automatically, in order to permit the functioning. Another door, located on the opposite wall, opens automatically and permits to gather the material, that was removed from the floor. Floor is made of extruded aluminum slats, anti-slip, anti-fingerprint and anti-bacterial: This material has the advantage of not having joints and and do not need regular maintenance. Floor cleaning can be easily programmed according to customer needs.



Automatic handbasin washing:

This system consists in right placed wipers that allow to clean the wash basin internal surfaces. This system allow to clean and cleanse the wash basin after every use. Wipers are placed at wash basin sides and they cleanse both walls and the sloping plane.

This system allows moreover to remove possible objects on the wash basin (**security system anti-syringe - exclusive TOI-LITECH**).

self cleaning toilets

TMAX



The handbasin is washed after each use, thanks to the presence of nozzles that spray water, cleaning the surfaces and sides

Thanks to our patented system **Lava;-Tergipavimento®** floor is cleaned from any waste present on the surface, washed, disinfected and dried

A washing system washes walls up to a height of 0.8 m near of wc-bowl

This system allows to clean walls after the customers use.

The seating surface and the inner walls of the toilet wc-bowl are washed with water and disinfectant sprayed from nozzles located on the device retractable rotary. Drying takes place during the closing of the door, thanks to a jet of high pressure air

A continuous water veil on the internal walls during the use, prevent the bowl from "adhesions"

self cleaning toilets

TMAX



DCN-ECO3®
At night, the toilet is disinfected by means of an automatic device which vaporizes the disinfectant inside the compartment member, without the release of polluting agents

Display with time available and alarm for the last three minutes of use

Exit button illuminated with LED

Built-in stainless steel waste basket:

- fire-proof
- antivandal
- durable

Stainless steel baby nappy change

- foldable version on request

double SOS pneumatic exit buttons



KIT WINTER PRO

Solution for increase toilette winter environment heating with:

- Winter environment security heating COMFORT PLUS
- Automatic depletion device of the water system
- Thermal and acoustical increase insulation
- Hot water boiler



KIT INOX

solution with stainless steel accessories vandal-proof with:

- Stainless steel wall-hung bowl with overflow control device
- Stainless steel baby-changing table
- Stainless steel handrail for disable users



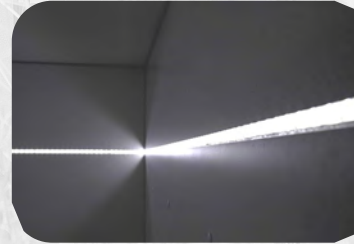
KIT VISTA PT®

- PT-help-sound system emission with voice instructions and messages to users visually impaired
- Internal control buttons with instructions in Braille and backlit with LEDs



KIT PTEEnvironment®

- solution for energy saving and environmental conservation with: Eco LED - internal and external Eco Led strip lighting for energy
- Eco Flush: extra flush device
- DCN-ECO3
- Roof Insulation "grass type"

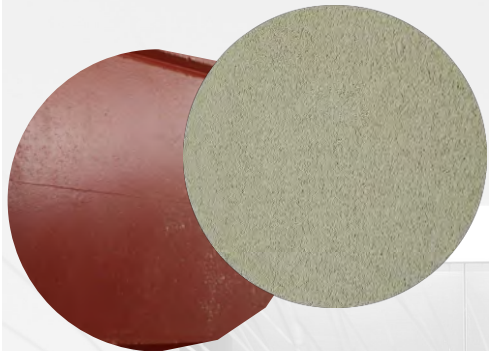


EXTERIOR - finishing



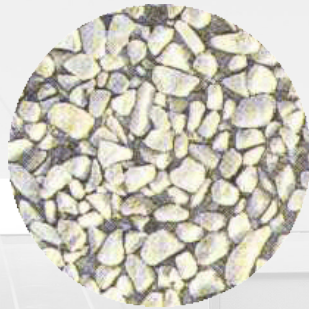
CONCRETE

COLORED PLASTED



RAL COLOR

CARRARA



GREY



MINCIO



VERONA



RED

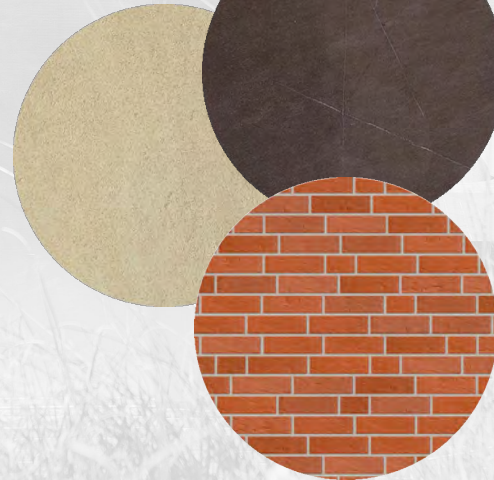


BAS-RELIEF
WOOD SLAT

CLOSED
SLAT

OPEN SLAT

STONE



SLATE

GRILLE



STEEL



BRICKS

HPL

EXTERIOR - optional



PAINTED SLIDING DOOR



STAINLESS STEEL SLIDING DOOR

AMSTERDAM FLASHING



MILAN FLASHING



VENEZIA FLASHING



INFO PANEL

- lighting display
- entrance with coin or badge (on request)

self cleaning toilets

TMAX



www.toilitech.com

VIA GIOTTO 1
20010 BAREGGIO (MI) - ITALY
Tel.: (+39) 02 90 39 00 02
Fax: (+39) 02 90 19 26 2
info@toilitech.com

self cleaning toilets

TMAX